

Children & Young People's Services Scrutiny Committee

8 June 2022

Governance and Forward Planning arrangements in Children's Services



The Practice Improvement Plan (PIP)

The PIP is the cornerstone for all practice improvement work; it informs the content of the other service plans.

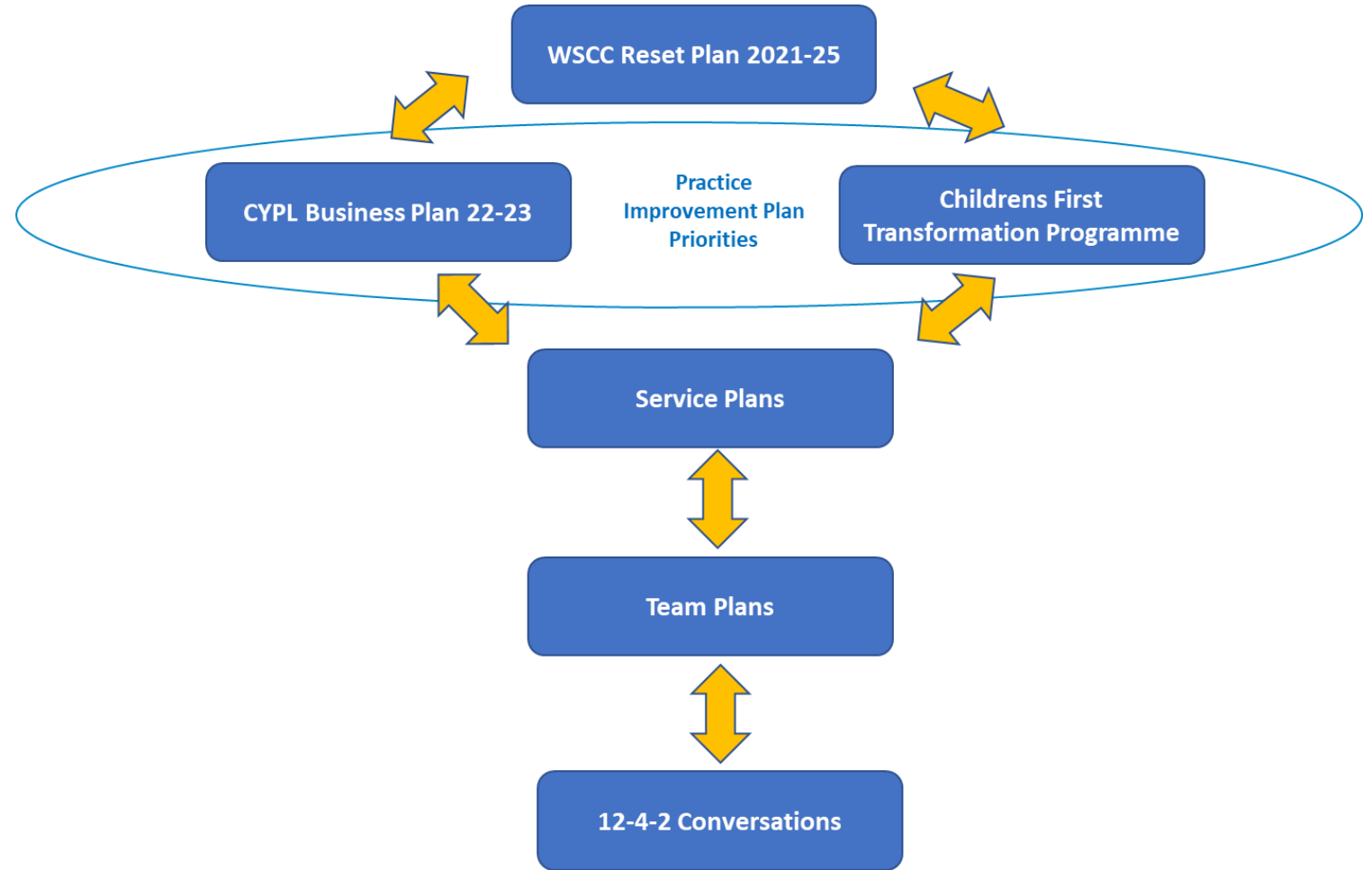
There are 3 key priorities:

Practice Improvement: achieve a 'good' level of practice by the end of 2022/23

Leadership: develop effective professional leadership and management capability throughout the service

Partnerships: achieve effective partnership working, delivery and strategic planning

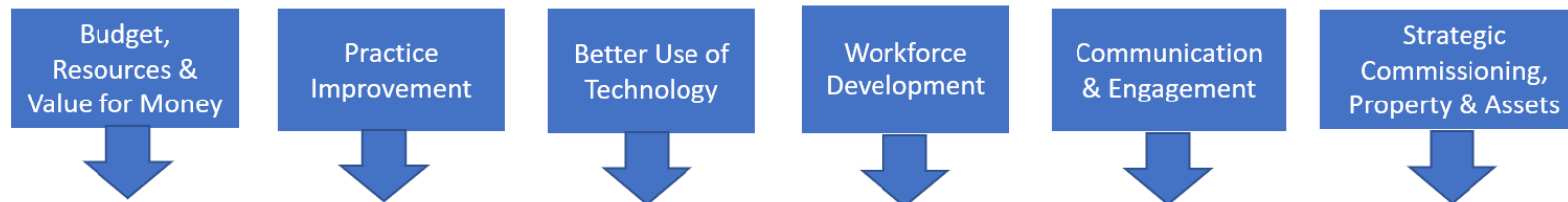
Internal Business Plans



CYPL Transformation Programme overview

V9 May 22

Supporting workstreams



Children first transformation overview

Operational workstreams

Family Safeguarding – Children’s Social Work (Family Support & Protection, MASH, Assessment and Intervention)

Early Help – Service Re-design, Implementation & Evaluation

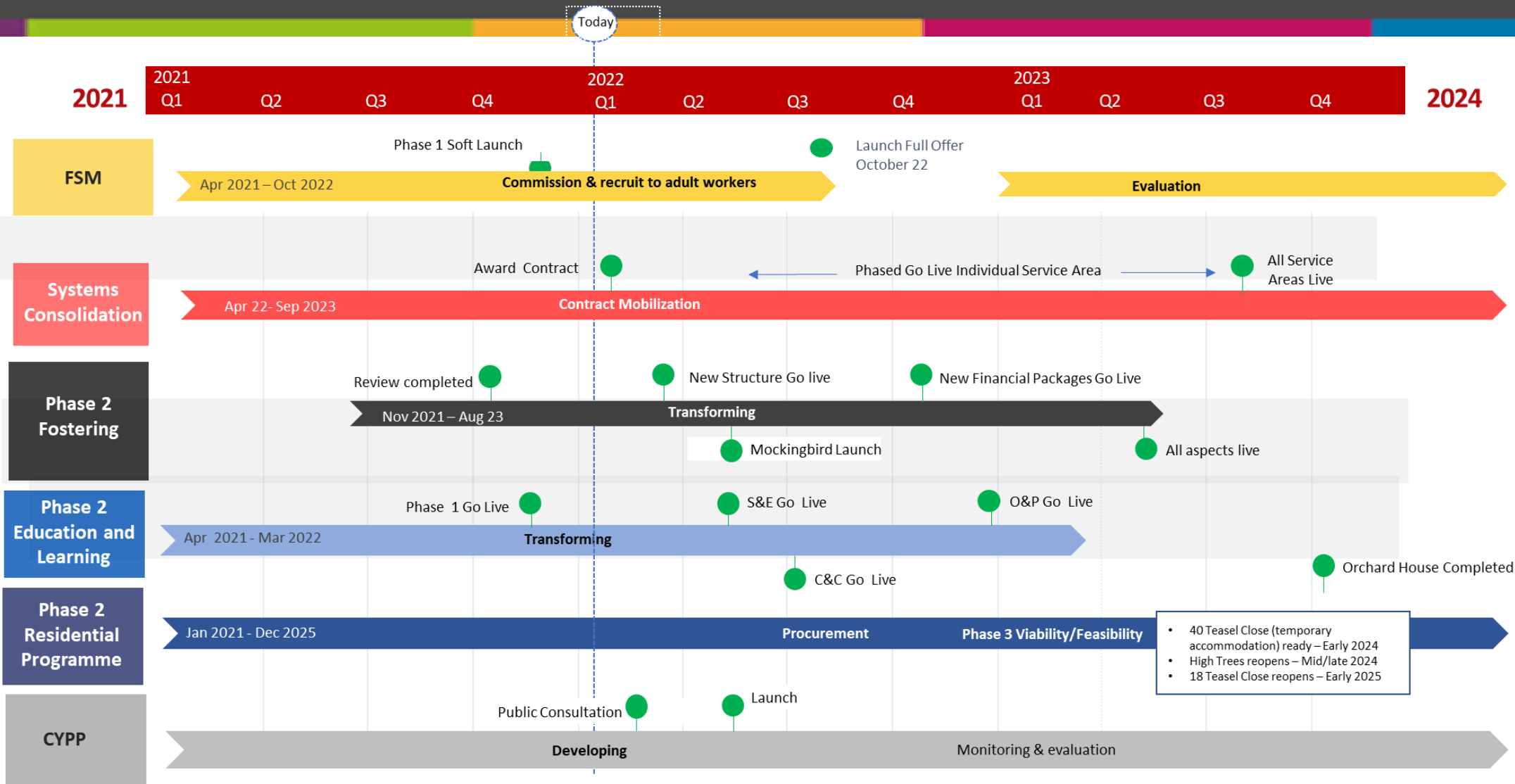
Corporate Parenting – Children we Care for, Care Experienced, Placement Sufficiency & Commissioning

Contextual Safeguarding (Drug and Sexual Exploitation Services)

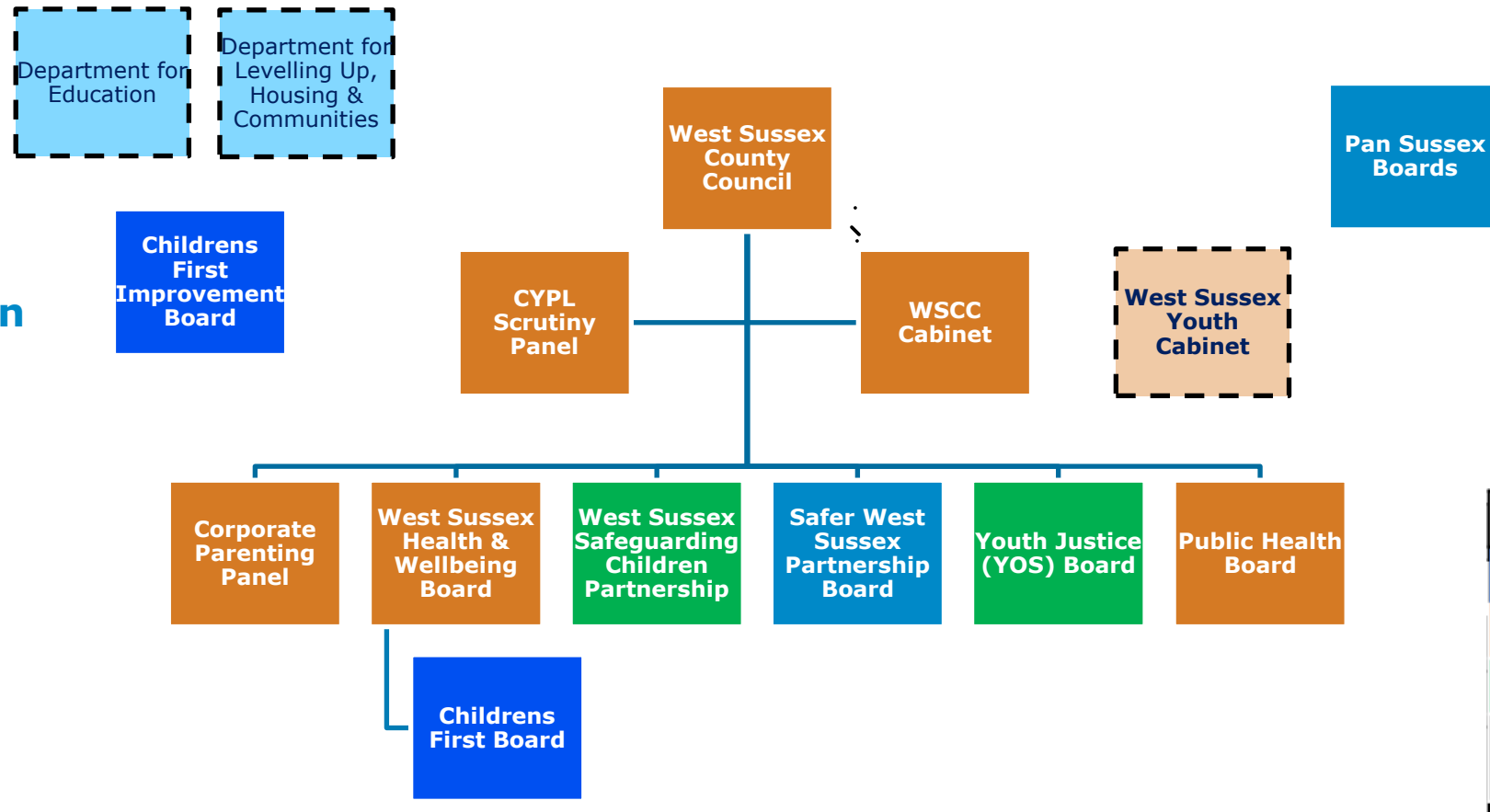
Education – Service Re-design for Standards & Effectiveness, SEND & Inclusion, Commercial & Contracting, Organisational & Planning, Virtual School

Safeguarding, Quality and Practice – Independent Reviewing, Principal Social Worker, LADO & Partnerships

Children First Roadmap 2022-24

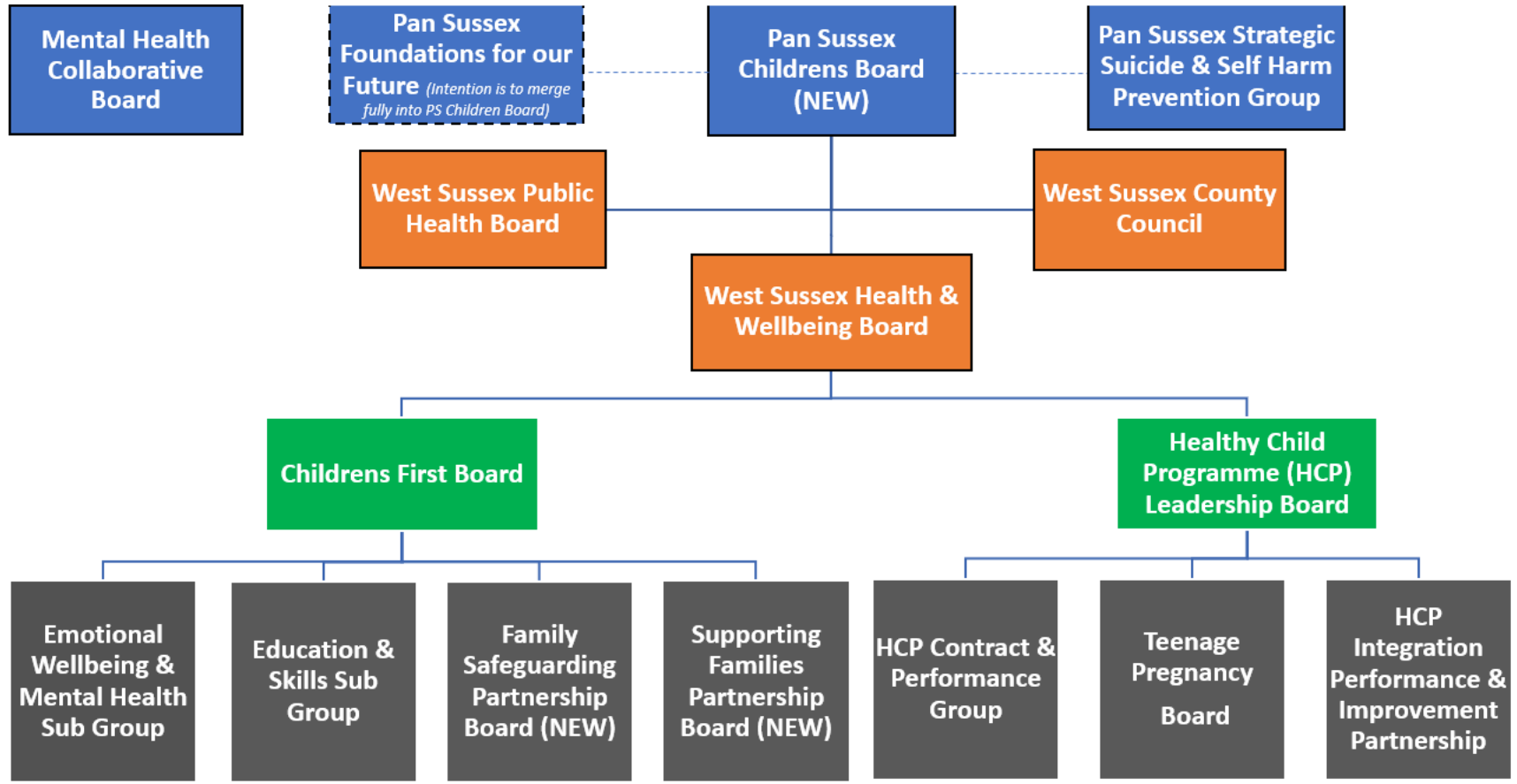


Hierarchy involved in oversight of Children's Services



Key
Pan Sussex
WSCC Meetings
Partnership Meetings
Children First Meetings

CYPL Operational Boards/Meetings



Key
Pan Sussex
WSCC Meetings
Partnership Meetings
Children First Meetings

See attached appendix for descriptions of groups

Summary

Governance: the arrangements are considered robust, and appropriate for continuous service improvement in the period following the withdrawal of the requirement to create a Children's Trust

Readiness for future Ofsted inspection: these arrangements will assist the service to prepare effectively for the next full inspection

Partnership: the structures in place promote close working with partners to achieve mutual aims and objectives

Child-focused: children's wellbeing is at the heart of these arrangements; young people share in governance roles and their voices are heard

Golden Thread: all members of staff understand the improvement aims, and have personal objectives linked to high-level plans through intermediate service and team plans